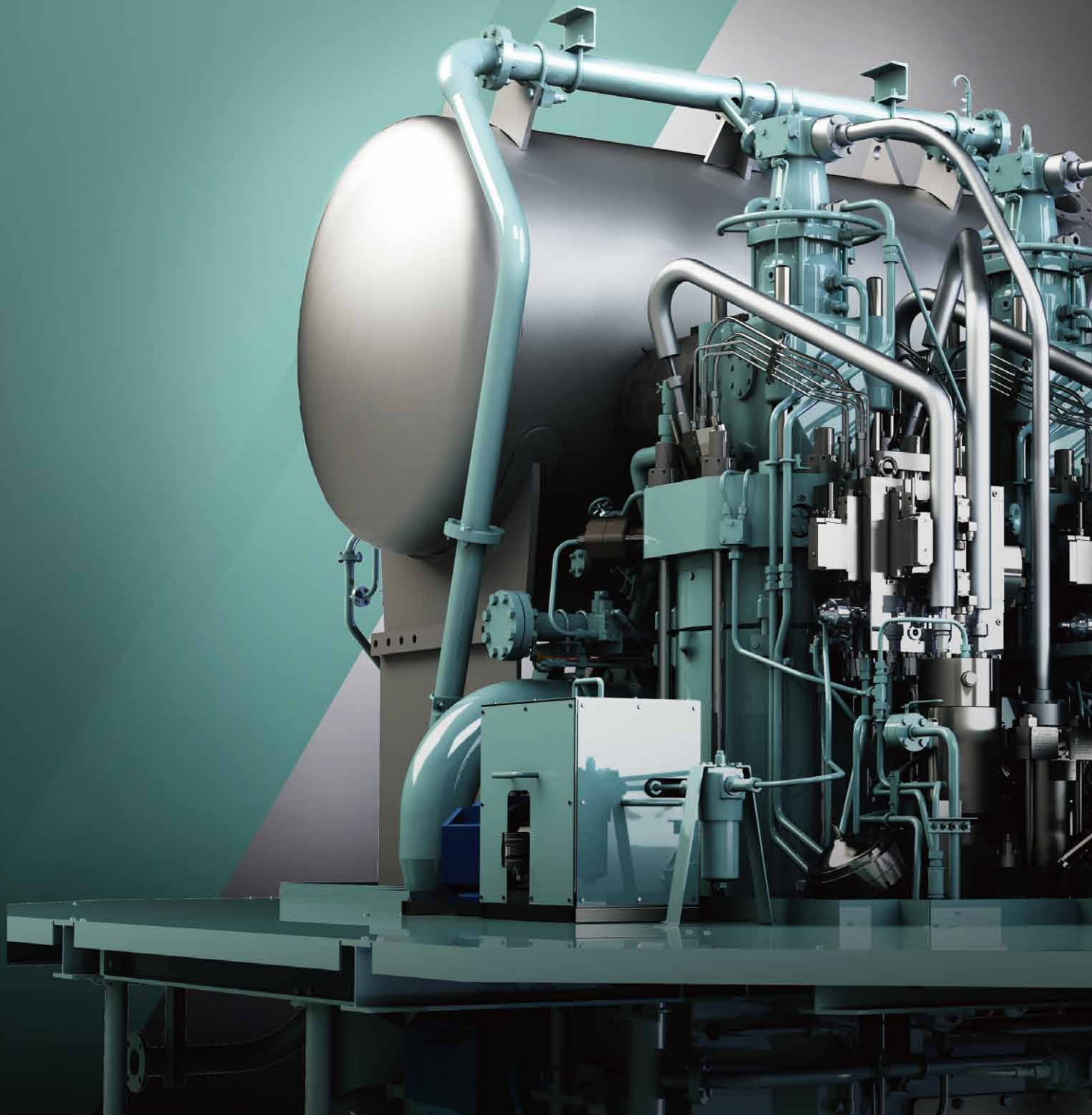


Kawasaki-MAN B&W

ME-GI Engine

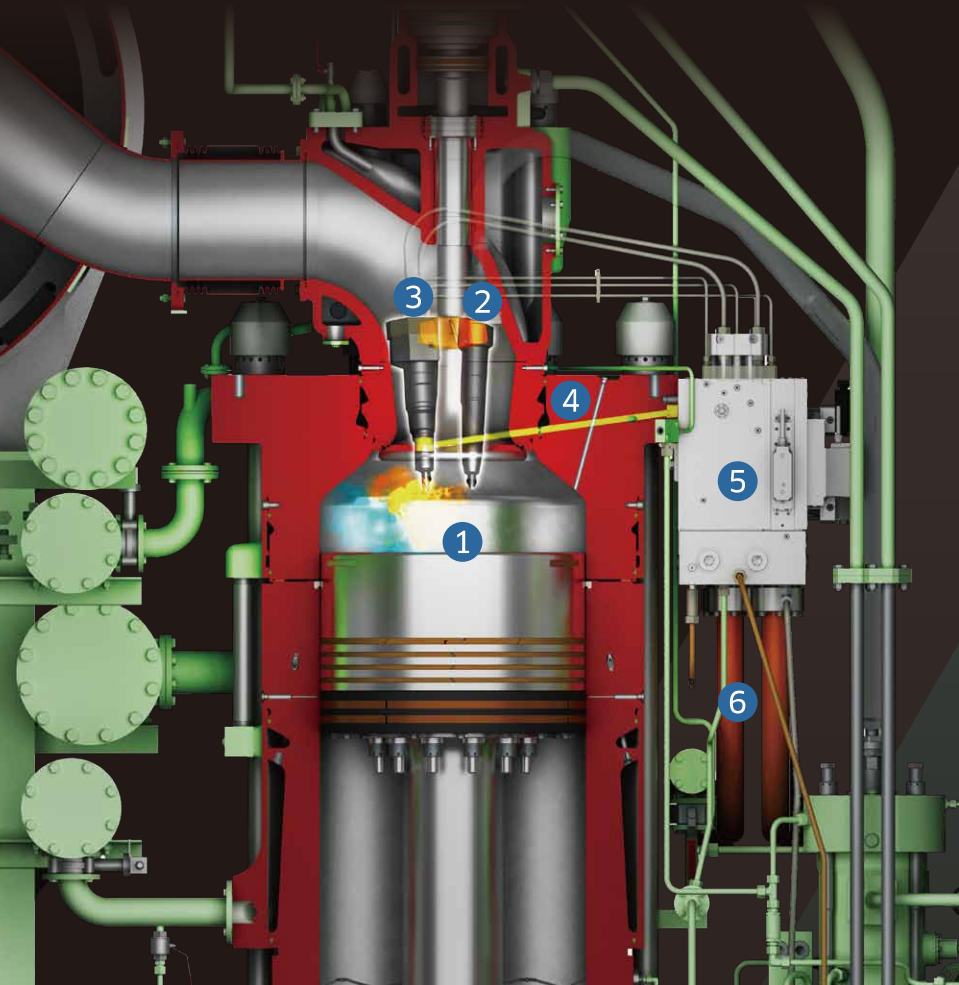
New generation gas/oil
dual fuel 2-stroke engine



Kawasaki-MAN B&W ME-GI Engine

Lower CO₂/NO_x
emission by gas fuel

ME-GI is dual fuel 2-stroke engine. ME-GI is able to reduce CO₂/NO_x emission and minimize SO_x emission by gas fuel.



Application of Diesel cycle with gas injection and pilot oil

ME-GI has an advantage for fluctuation of engine load and no knocking by pre ignition. Methane Slip has been minimized.

- 1 From actual footage (colorized)
Yellow = pilot oil
Blue = gas fuel
- 2 Conventional slide fuel valve
- 3 Gas fuel valve
- 4 Gas distribution channel (yellow)
- 5 Gas distributor block
- 6 Gas chain link
double-walled pipes

New Components for GI

Improved high reliability
2-stroke diesel engine to GI



ME-GI has been designed based on 2-stroke diesel engine which has many records and high reliability. The easy maintenance has also been succeeded.

High performance and
high reliability



Kawasaki has built a full scale test engine; 2S50ME-C GI and the fuel gas supply system. Gas operation has been tested continuously. And the performance and reliability have been examined.



Based upon the experiences and customers' confidence, we have manufactured a number of main diesel engines at Kobe works with its history of over 100 years.

 **Kawasaki**
Powering your potential

Kawasaki Heavy Industries, Ltd.

Gas Turbine & Machinery Company Machinery Division 1-14-5, Kaigan, Minato-ku, Tokyo 105-8315, Japan
Tel: +81-3-3435-2374 Fax: +81-3-3435-2022 <http://www.khi.co.jp>