

Robot number (serial number) How to check it.

When you register via the QR code on the controller-side manufacturing nameplate, the unit number will be entered automatically.

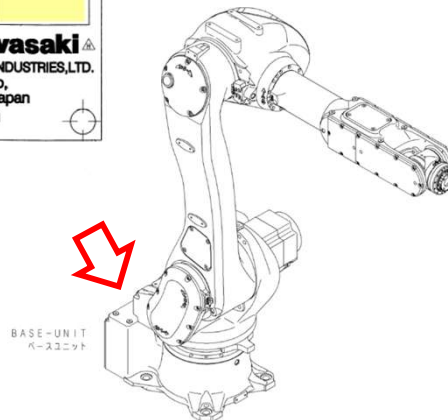
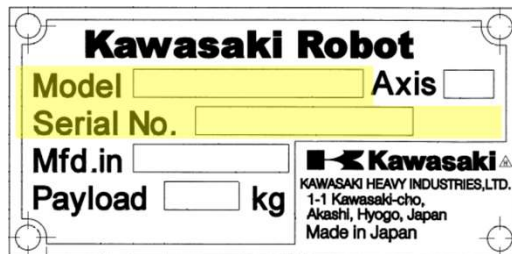
If the QR code is not printed, Check the information in the figure below.

Type the Model and Unit Number (Serial No.).

Robot arm side

(Example)RS Series

Check the model plate near the base unit.



Controller side

(Example)F-Series

Check the manufacturing nameplate seal on the side of the panel.

