

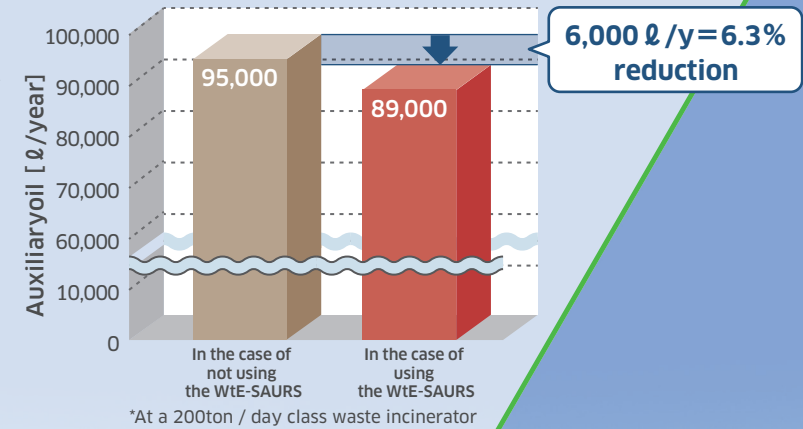
Waste to Energy-Smart Automatic Running System

WtE-SAURS

Minimization of the amount of consumption of auxiliary oil* by the reduction in frequency of the startup of the incinerator

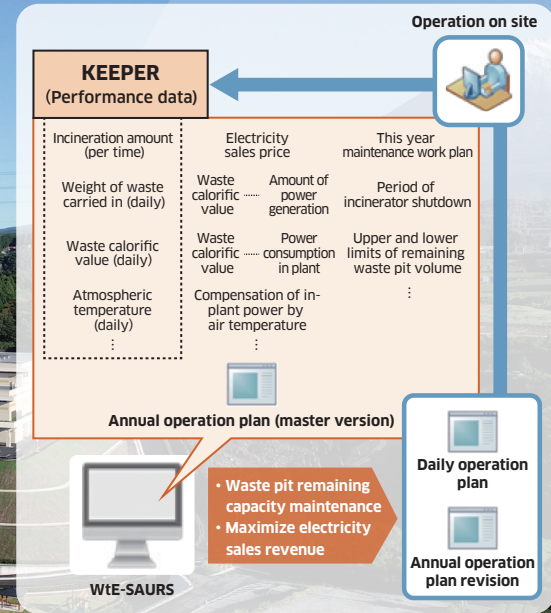
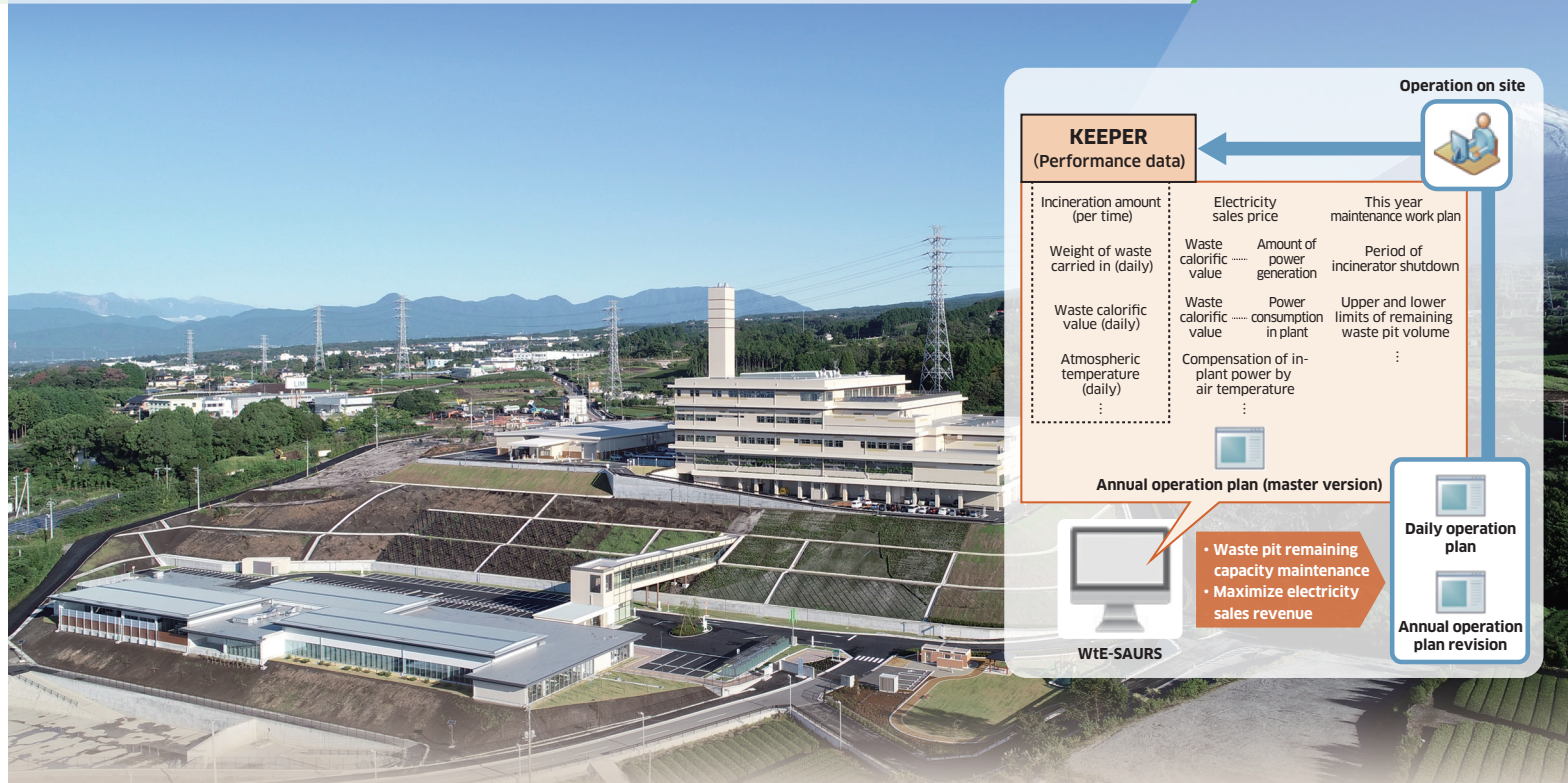
Efficient operation planning of the incinerator minimizes the number of incinerator startups and reduces the amount of combustion fuel used by the burner when the incinerator is started.

*Fuel that assists in the combustion of waste when the incinerator starts up (heavy oil, kerosen, etc.)



2021

Kawasaki
 Ecological Frontiers
 S class



Product Description

WtE-SAURS is a system that can modify the personal operation plan of a waste treatment facility into an efficient operation plan.

Features

- Maximizing revenue from waste power generation
- The input conditions of the incinerator can be changed. Even if there is a difference from the actual result, the operation plan can be corrected instantly