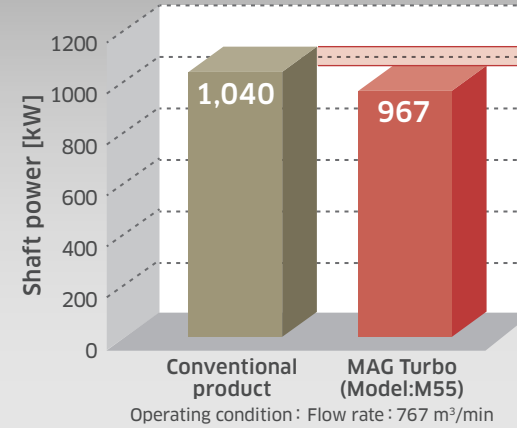


# MAG Turbo (Model:M55)

Aeration blower with top level of energy saving performance at sewage treatment plants

By adopting a high-voltage, large-capacity high-speed drive system (frequency inverter, active magnetic bearings & high speed permanent magnetic motor) and newly developed impeller, MAG Turbo (M55) enables energy saving operation.



Difference: 73kW  
= 7% reduction

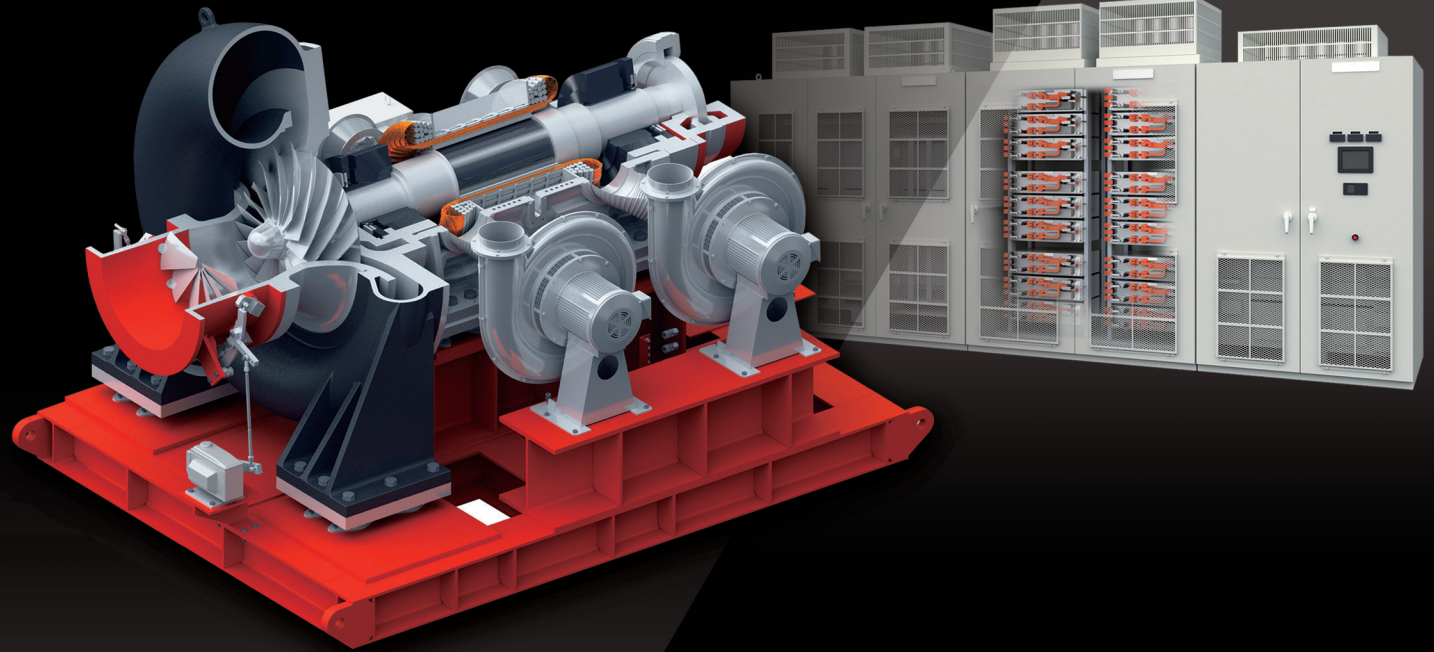
In case of  
24 hours operation

Differences in electric energy:  
1,752kWh per day



**2021**

Kawasaki  
Ecological Frontiers  
S class



## Product Description

MAG Turbo (M55) is aeration blower model for sewage-treatment plants that significantly expands capacity of air volume and power from the other MAG Turbo models.

## Features

- By applying frequency inverter, active magnetic bearings and high speed permanent magnetic motor, MAG Turbo (M55) has following 3 features
  - High efficiency
  - Oil free
  - Low noise, low vibration